

Leveraging Public and Private Resources to Support Statewide Rural EMS in Nevada

John Packham, PhD

Associate Dean, Office of Statewide Initiatives
University of Nevada, Reno School of Medicine

2024 Flex Program Reverse Site Visit

July 17, 2024



University of Nevada, Reno

School of Medicine

Office of Statewide Initiatives

UNR Med's Office of Statewide Initiatives Oversees

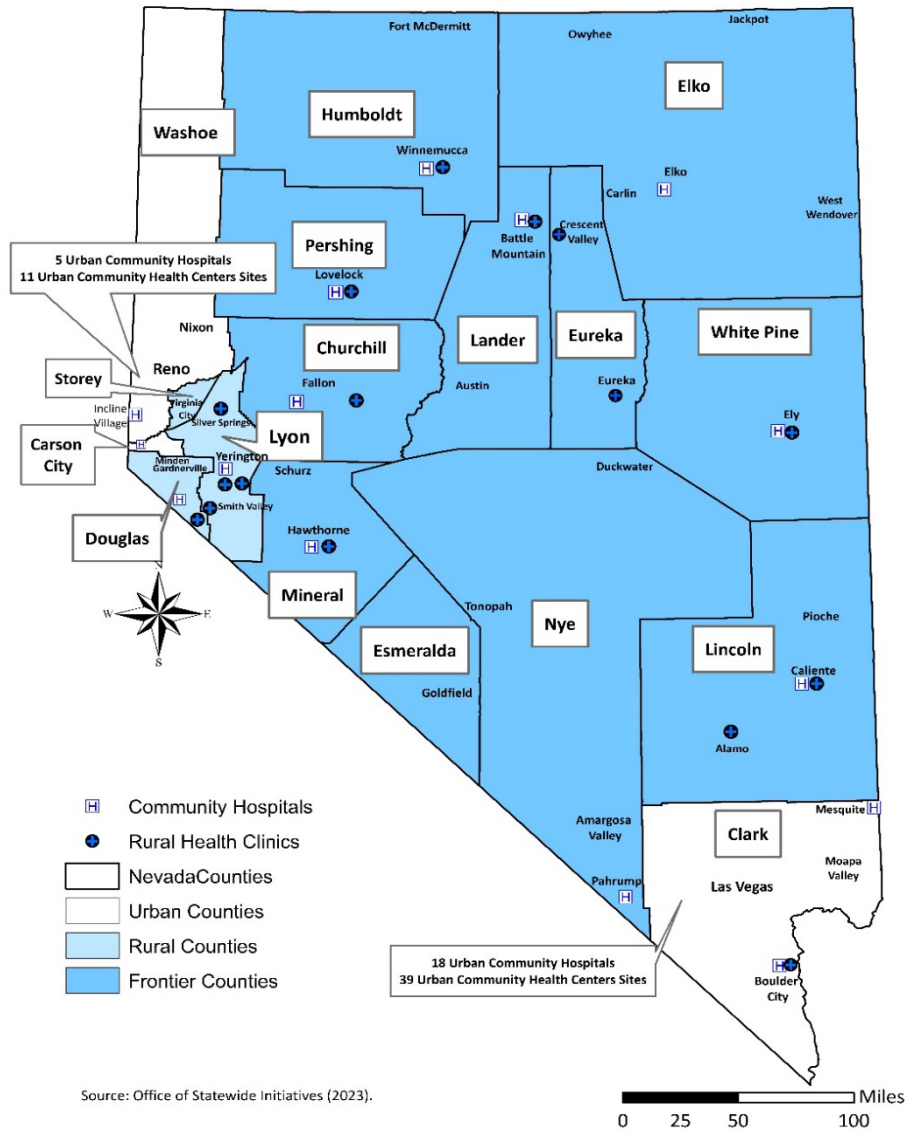


Nevada Instant Atlas
County-Level Health Workforce and Population Health Database

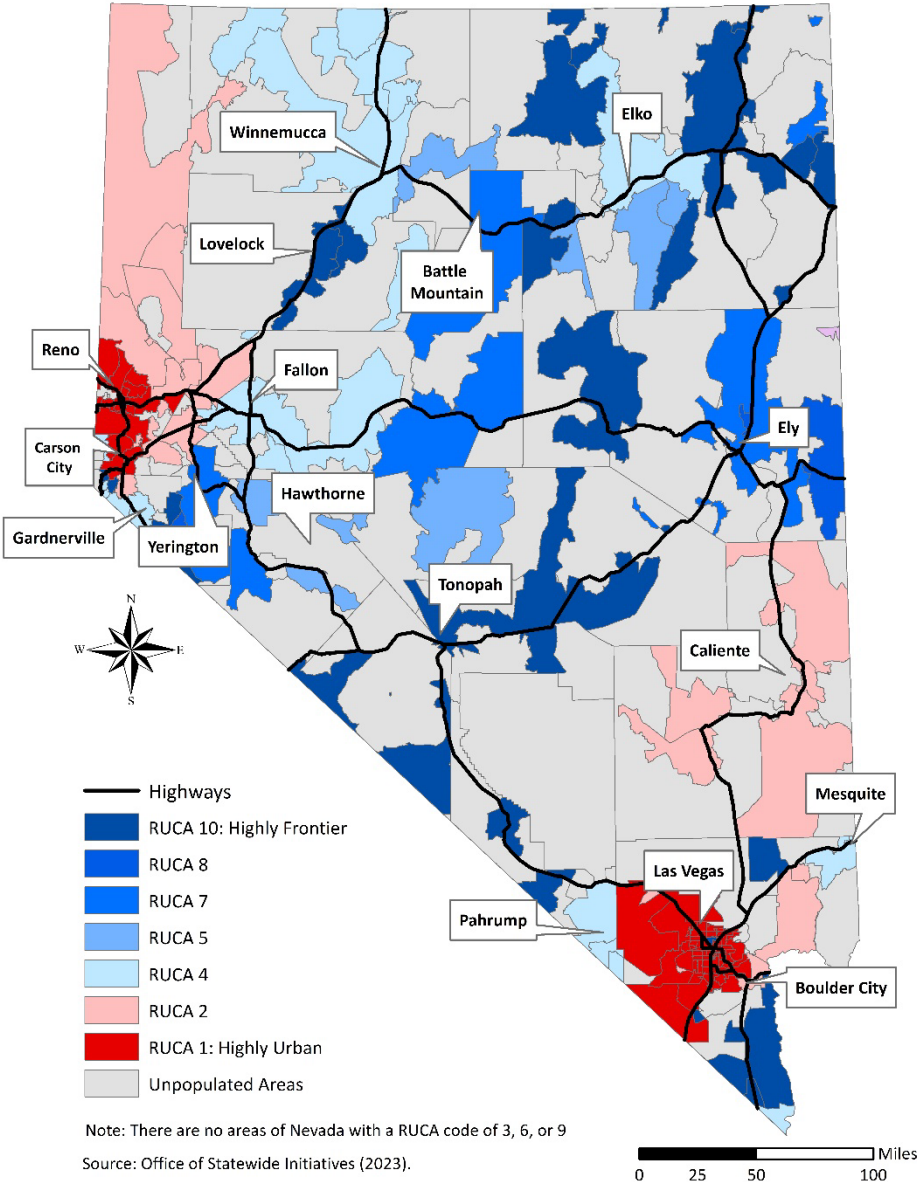


A Snapshot of Rural and Frontier Nevada in Fifteen Maps

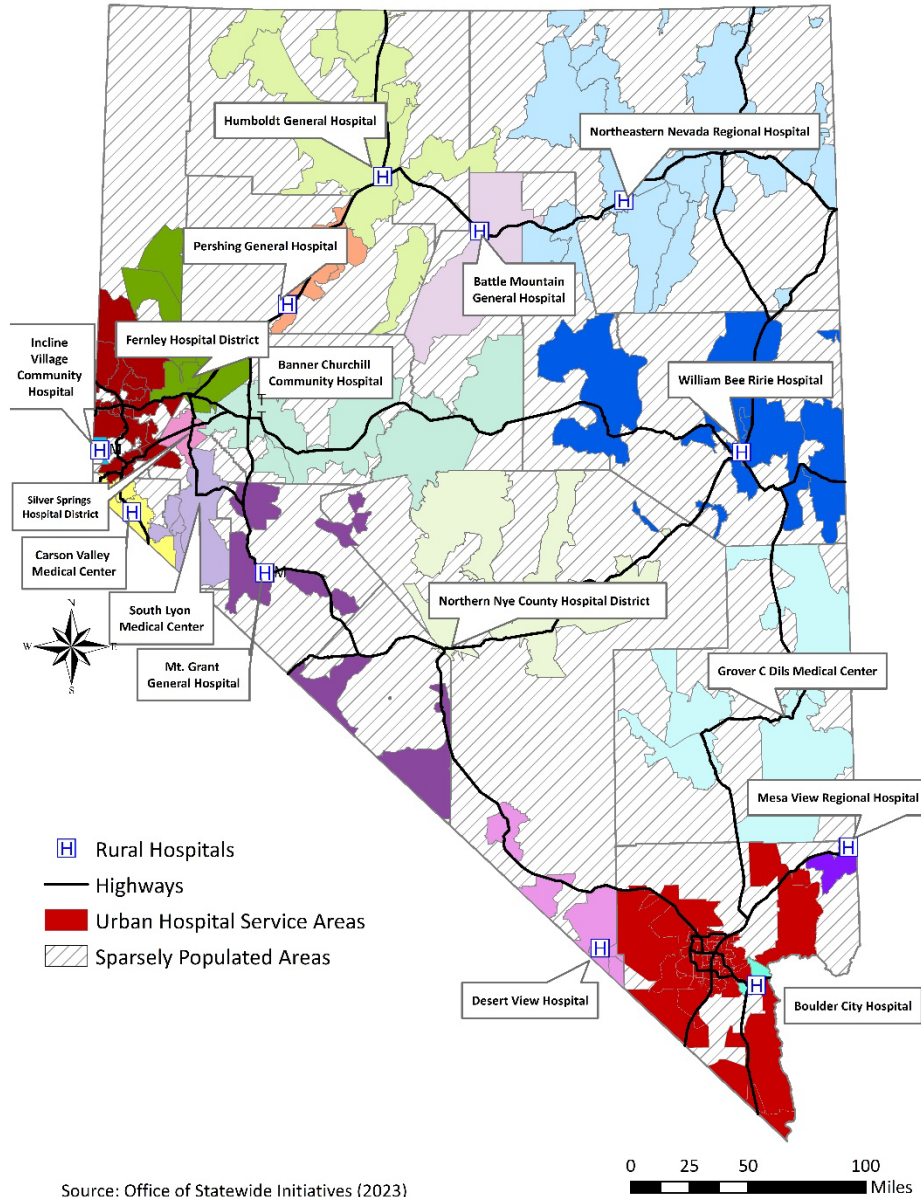
Urban, Rural, and Frontier Nevada



Lots of Frontier “RUCAs”!

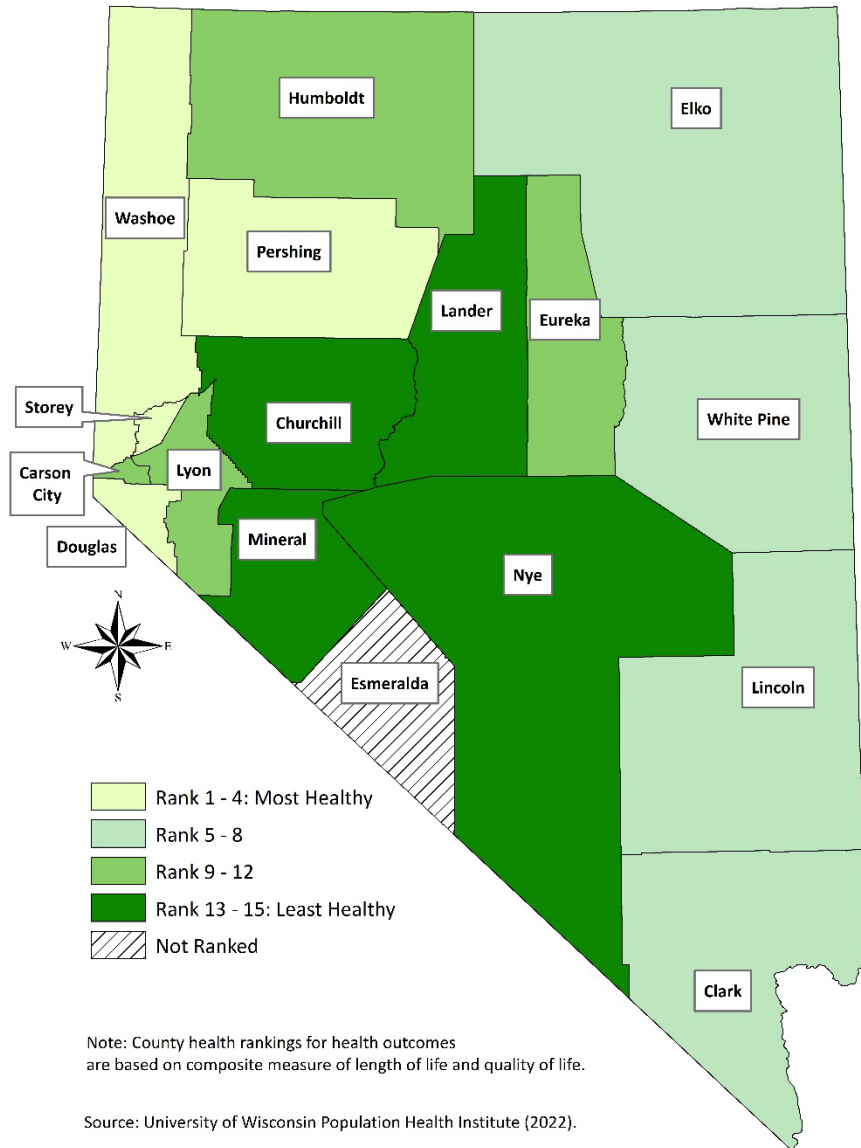


CAH Hospitals and Clinics

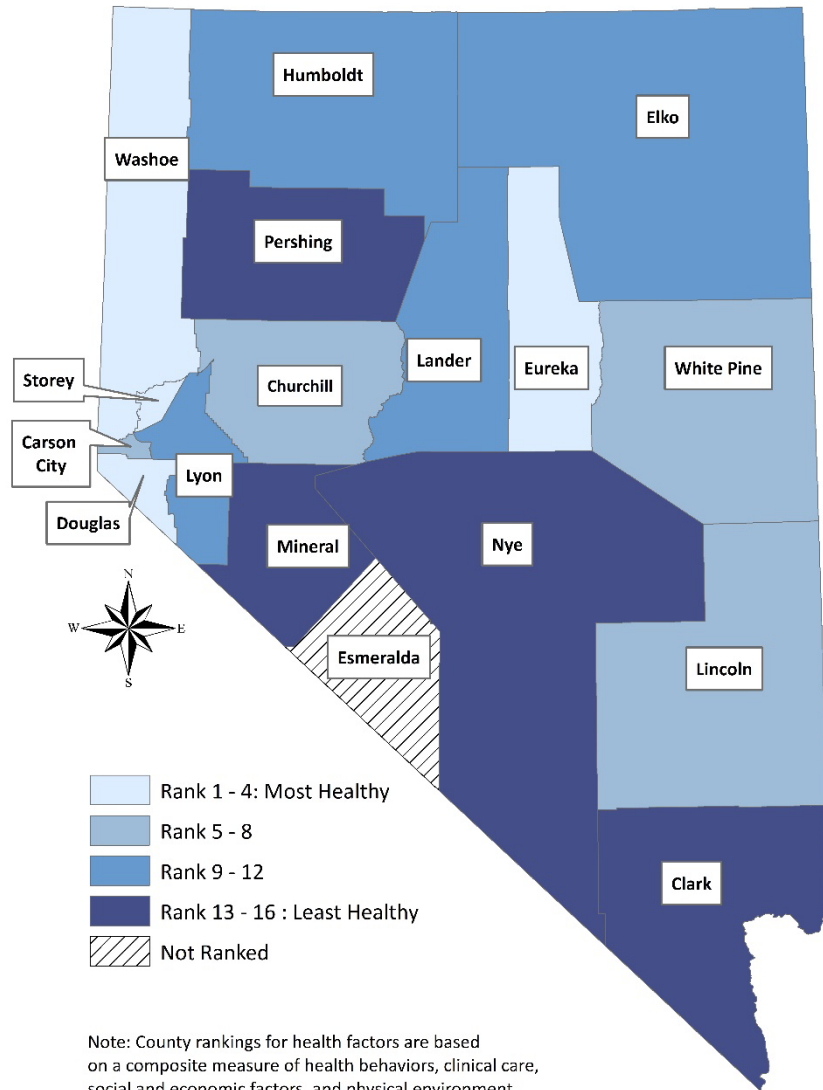


Health Outcomes – Today's Health

- Premature death
- Life expectancy
- Self-reported physical health and mental health
- Low birthweight babies
- Infant mortality
- Child mortality



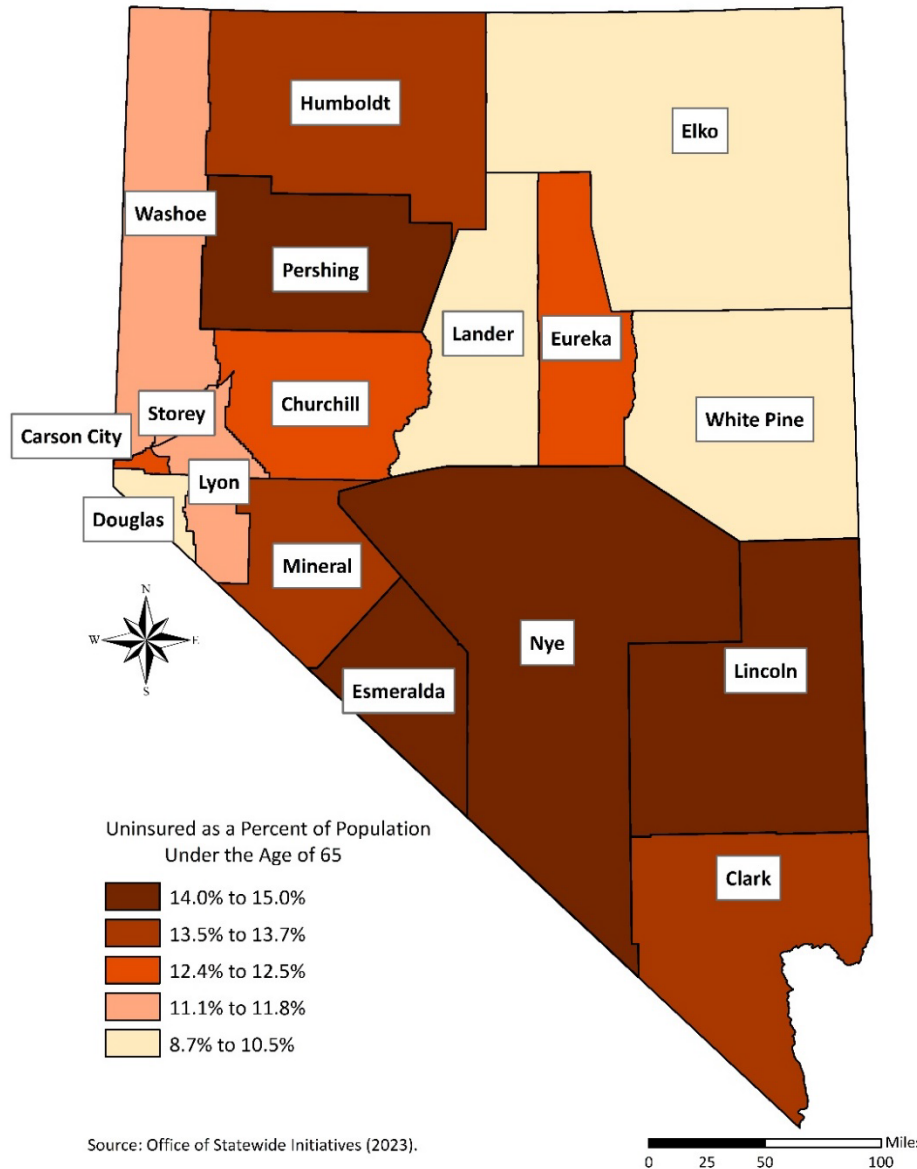
Health Factors – Tomorrow's Health



Source: University of Wisconsin Population Health Institute (2022).

- Adult smoking
- Diet and exercise
- Alcohol and drug use
- Access to and quality of care
- Income and poverty
- Education and employment
- Family and social supports
- Community safety
- Environmental quality
- Housing

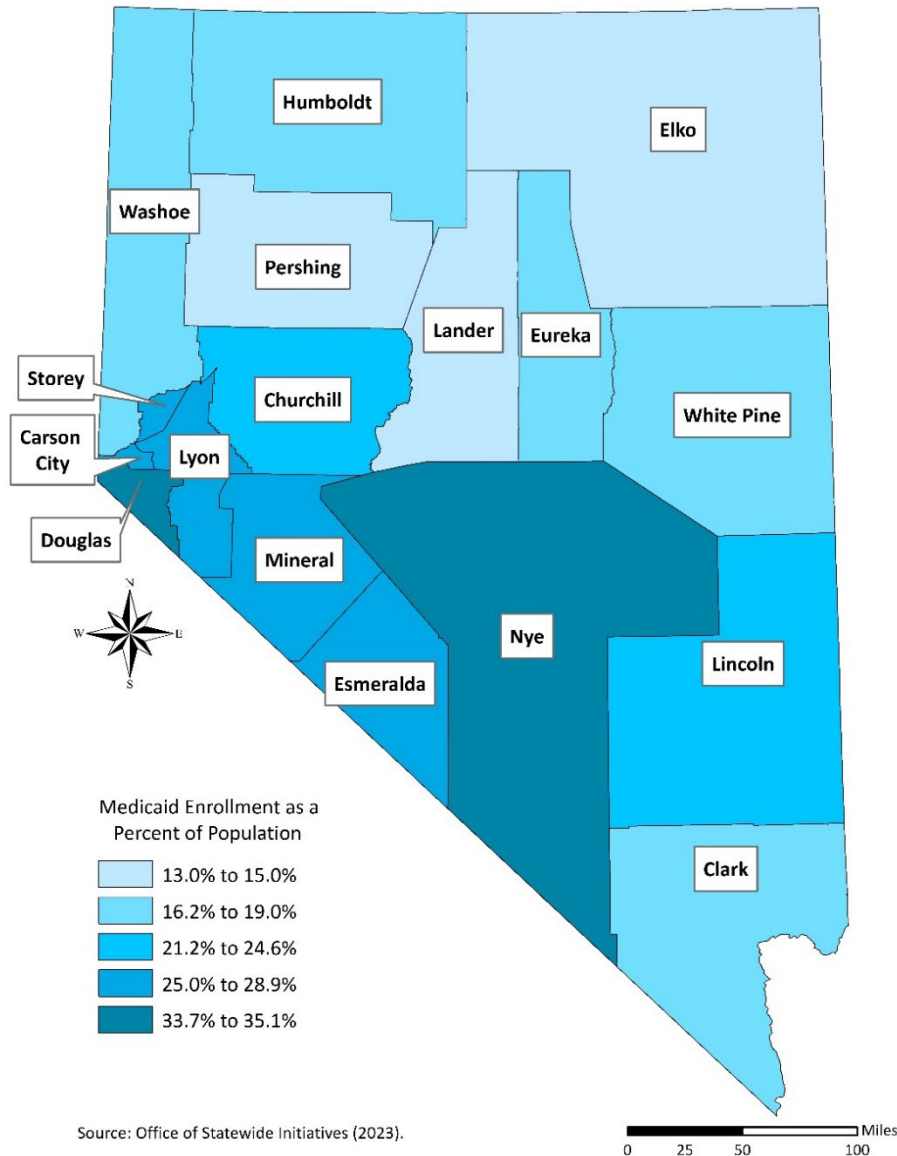
Uninsured



- 357,000 Nevadans or 13.0% of the state were uninsured in 2020, including 31,000 rural residents or 11.7% of the rural population
- Uninsured rates for the population under the age of 65 in rural Nevada range from 8.7% in White Pine County to 14.7% in Pershing County

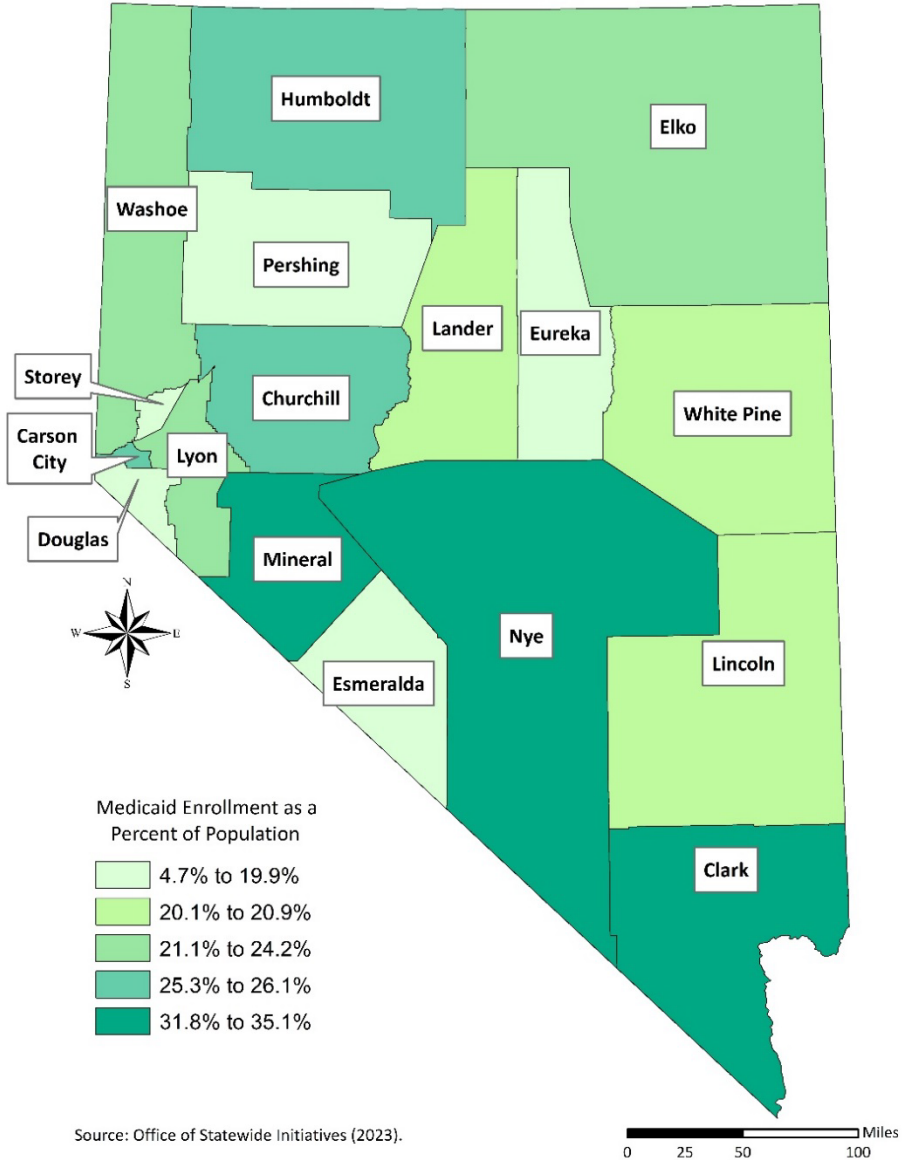
Medicare

- Rural counties possess higher percentages of Medicare enrollees
- 24.6% of rural residents are covered by Medicare
- Over the past decade, Medicare Advantage penetration has been greater in rural (124.0%) versus urban counties (101.7%)

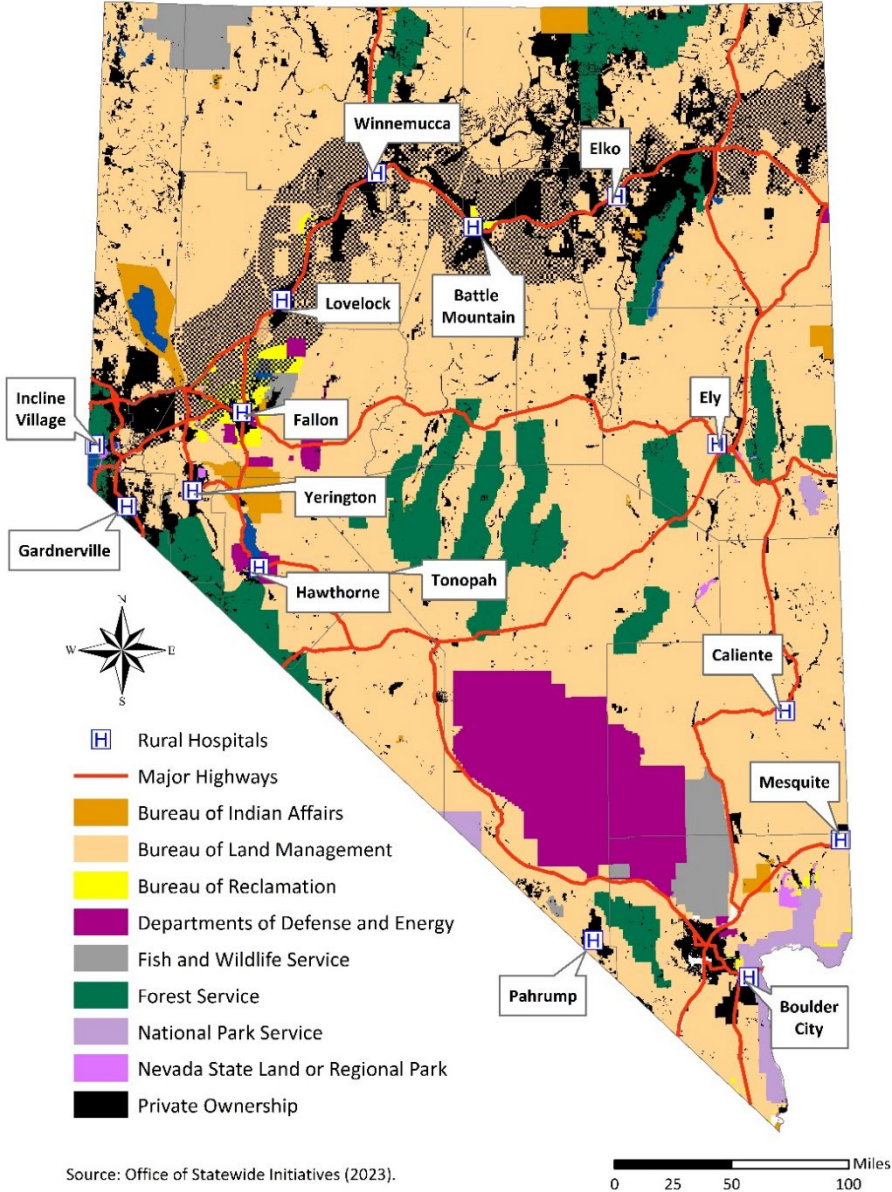


Medicaid

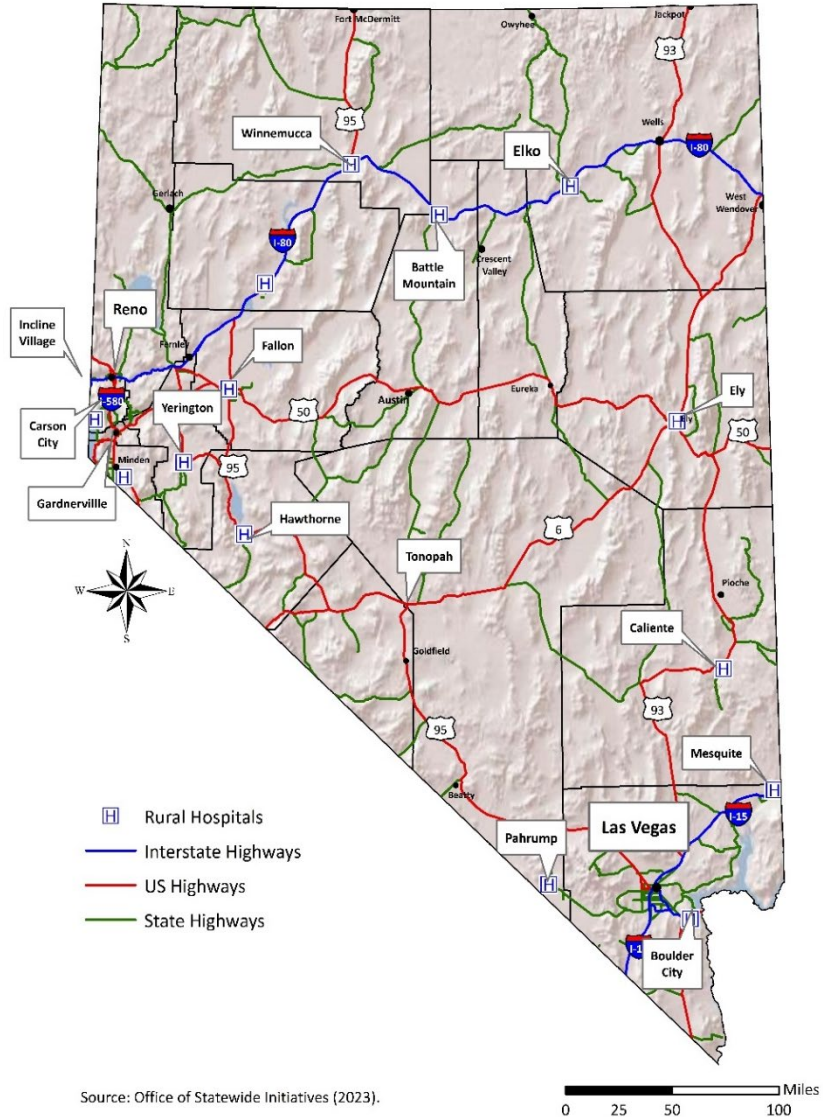
- Medicaid currently insures 924,000 Nevadans or 1 in 4 residents of the state
- Since 2011, Medicaid enrollment in Nevada’s rural counties has doubled
- Nevada Medicaid aims to have every recipient in a managed care plan by January 1, 2026



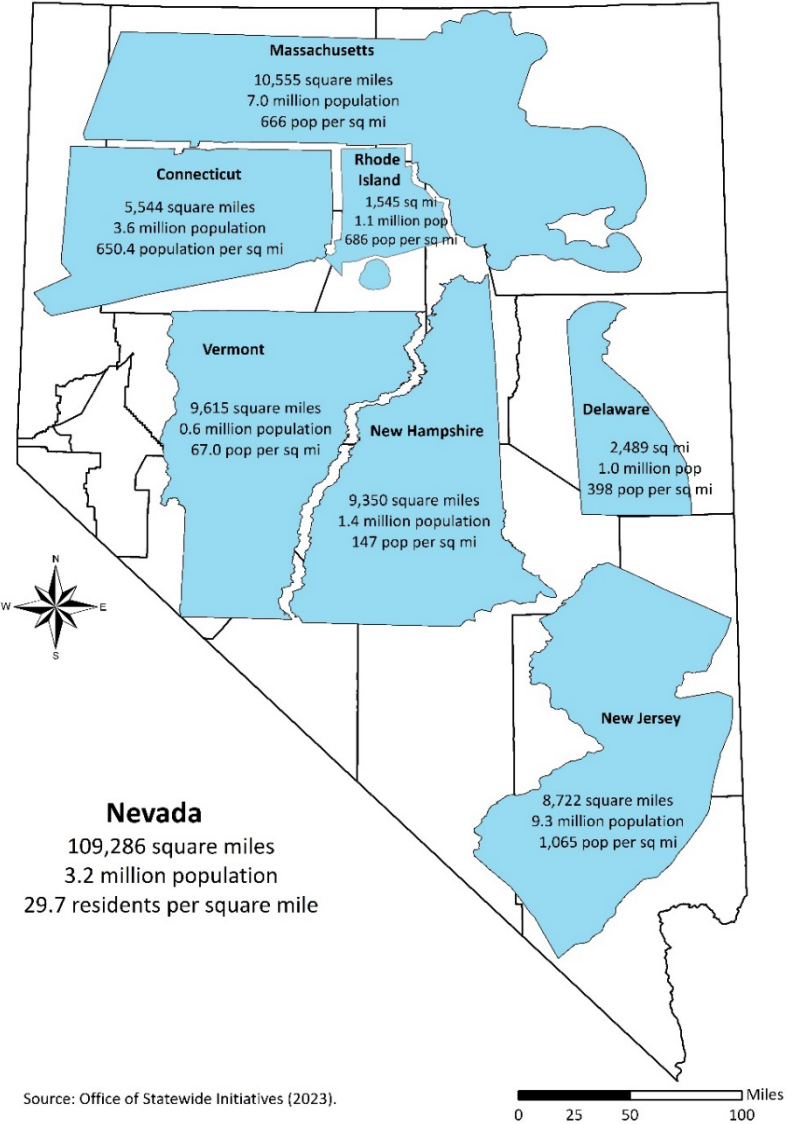
Land Ownership in Nevada



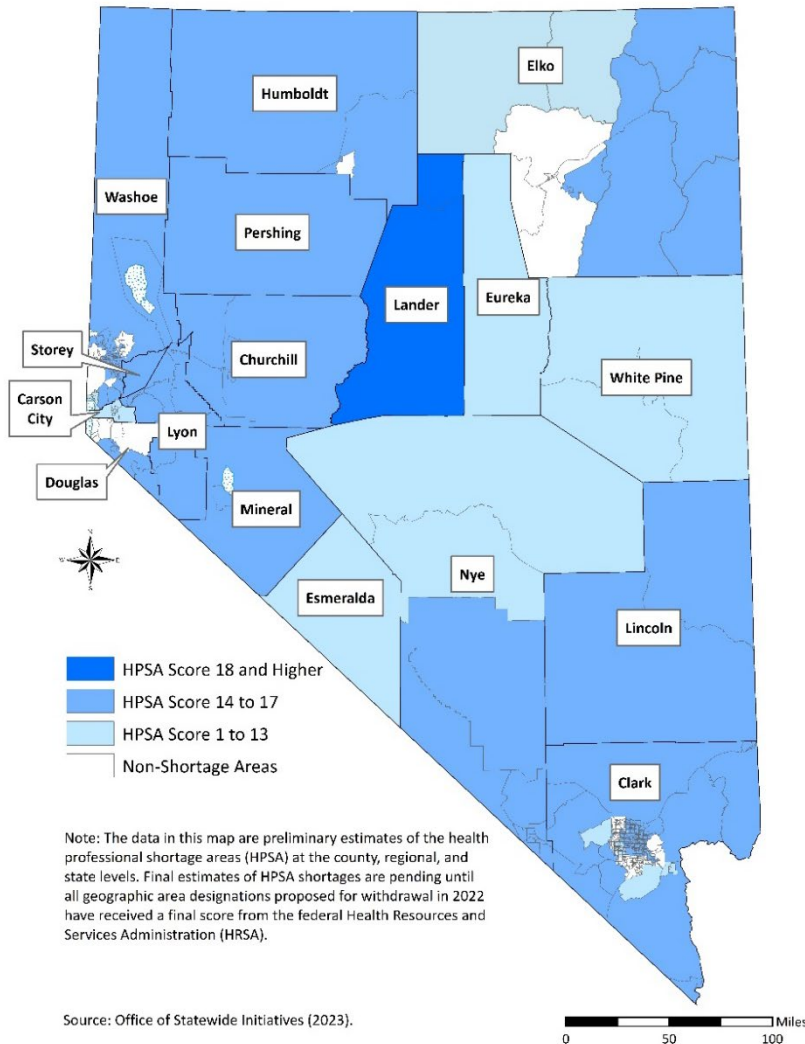
Topography



Geographic Expanse



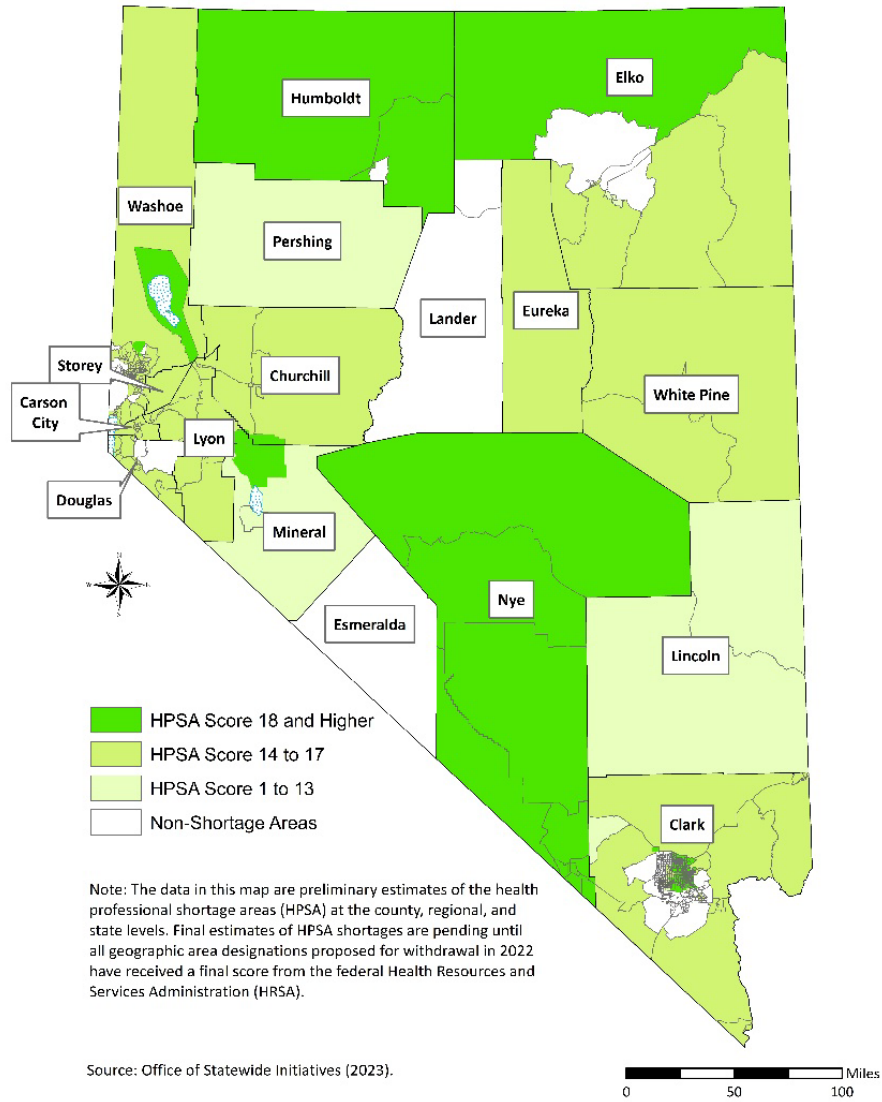
Primary Care Shortages



- Over 2 million Nevadans reside in a primary care health professional shortage area (HPSA) or 68.4% of the state's population of 3.3 million
- 11 of 14 rural and frontier counties of Nevada are single-county primary care HPSAs
- 247,000 rural residents or 81.6% of the rural population live in a primary care HPSA

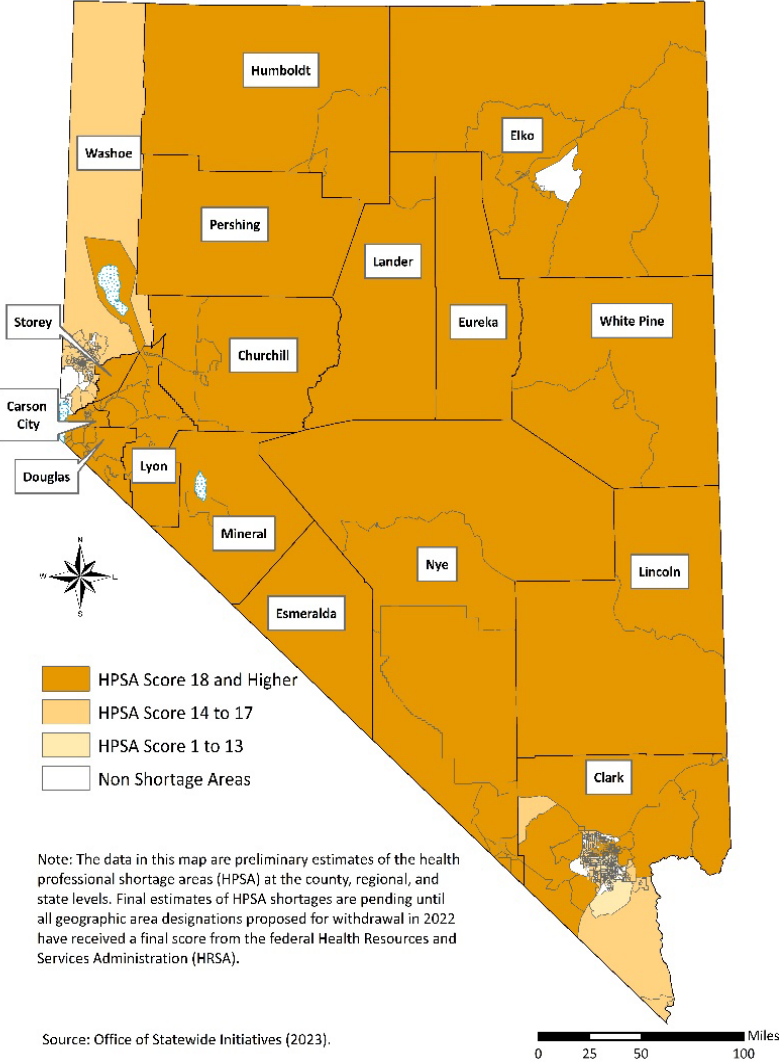
Dental Shortages

- 2.2 million Nevadans reside in a dental HPSA or 62.3% of the state's population of 3.3 million
- 12 single-county dental HPSAs in Nevada, including 11 of 14 rural and frontier counties of Nevada



Mental Health Shortages

- 2.9 million Nevadans reside in a mental HPSA or 85.6% of the state's population
- 15 single-county mental HPSAs in Nevada, including all 14 rural and frontier counties of Nevada



Leveraging Public and Private
Resources to Support Statewide Rural
EMS in Nevada

Nevada State Office of Rural Health

- SORH grant program
- Rural recruitment and retention activities, including 3RNet and Nevada Health Service Corps
- Nevada FLEX and SHIP Programs
- National Rural Health Day
- Implementation of state EMS grants from the 1998 Tobacco MSA
- Support for rural EMS improvement activities since 1977

Gerald Ackerman, MS

Assistant Dean, Rural Programs and Nevada SORH Director

gackerman@med.unr.edu

Keith Clark

Director of Rural Programs and Director of the Frontier Area Health Education Center

kclark@med.unr.edu

Nevada Flex Program

- CAH quality improvement in Nevada's 13 CAHs
- CAH operational and financial improvement in Nevada's CAHs
- CAH population health improvement in CAH communities
- Technical assistance to CAH-eligible hospitals and communities
- Support for statewide rural EMS improvement activities since 1999

Laima Etchegoyhen, MPH

Nevada Flex Program Coordinator

laimae@med.unr.edu

Annual Nevada Rural EMS Conference

- Conference has been held annually since 1991
- Hosted by the Nevada SORH based in the University of Nevada, Reno School of Medicine with support from Great Basin College, Nevada State EMS, local mines, and vendors
- Conference aim is to enhance skills and knowledge of rural EMS professionals ranging from Emergency Medical Responders to Paramedics
- Provides continuing education units (CEUs) from the Commission on Accreditation for Pre-Hospital Continuing Education (CAPCE)
- Attendance typically ranges from 250 to 350 EMS providers from agencies in all 14 rural and frontier counties in Nevada

2024 Nevada Rural EMS Conference: Going Back to Our Roots

- 32nd installment of the Nevada Rural EMS Conference
- September 18-21, 2024 at the Elko Convention Center in Elko Nevada
- Preconference topics include Tactical Emergency, Casualty Care (TECC), Advanced Medical Life Support (AMLS), and Handtevy
- This year's conference will feature speakers from across the country, as well as local experts, who share their insights and expertise

Alexis Kirby

Education Coordinator, Nevada State Office of Rural Health

alexissanchez@med.unr.edu



Community-level Rural EMS Assessments and Action Planning

- Rural EMS budget studies and analysis
- Rural hospital community paramedicine and air ambulance feasibility assessments
- Coordination with the UNR Center for Economic Development and the Nevada Cooperative Extension

John Packham, PhD

Associate Dean, Office of Statewide Initiatives

jpackham@med.unr.edu

Annual Statewide Rural EMS Agency Survey and Action Planning

- Ongoing assessment of the capacity and needs of Nevada's 59 rural EMS agencies
- Use results to inform local and state policymakers to improve EMS sustainability and quality in Nevada
- 2024 Survey Highlights
 - Rural EMS agencies cited personnel recruitment, personnel retention, and vehicles are the top 3 needs
 - More than a quarter of rural EMS personnel are volunteers
 - An estimated 292 individuals need to be hired to achieve full staffing levels
 - Current rural EMS fleets need to add 48 vehicles and replace another 120 vehicles

Amanda Brown, MPH

OSI Technical Assistance and Outreach Coordinator

anbrown@med.unr.edu

Nevada First Responder AED Evaluation Project

- Building on previous Nevada SORH work on *Nevada Project Heartbeat*, whose aim was the promotion of early defibrillation, education in sudden cardiac arrest, and training in AED/CPR in a wide-range of settings in rural Nevada
- Project goal is to increase the survivability of out-of-hospital cardiac events in Nevada by providing AEDs to law enforcement First Responders
- Data collection and analysis will be used for ongoing process improvements, best practices, and future recommendations for local, state, and federal policymakers
- Partnership and funding from the Nevada State EMS Office and the Helmsley Charitable Trust

Amanda Brown, MPH anbrown@med.unr.edu / Laima Etchegoyhen, MPH laimae@med.unr.edu

AHEC-like Rural EMS Recruitment and Retention Activities

- Develop and expand education pipeline programs to grow EMS workforce in five CAH communities in Nevada
- Outreach and collaborate with K-12 local schools and community colleges to recruit students in rural and frontier communities that are interested in EMS
- Outreach and educate community leaders and stakeholders in rural and frontier communities on the need for comprehensive and sustainable EMS services in their communities
- Assist EMS agencies and staff with training and certification costs including travel, educational materials and other associated training and certification expenses
- Coordinate an ongoing annual assessment of all rural EMS agencies in Nevada that addresses financial, operational, and workforce challenges faced by rural agencies and communities

Questions?

